

# Paradox to Paradigm

Architecture in the Age of Network Society

An International Conference

Dates: 9<sup>th</sup> and 10<sup>th</sup> March 2018  
Venue: Radisson Blu, Nagpur

## Key Features



Speakers of National and International recognition



Paper & Poster presentations



Networking Dinner with experts and speakers



Conference proceedings with ISBN number

Organised by



WOMEN'S EDUCATION SOCIETY'S  
SMT. MANORAMABAI MUNDLE  
COLLEGE OF ARCHITECTURE  
NAGPUR

LAD College Campus, Seminary Hills,  
Nagpur, Maharashtra, India - 440006

P: +91 712 2510208 | M: +91 9960298719

W: [www.smmca.edu.in](http://www.smmca.edu.in) | E: [admin.info.ladarch@gmail.com](mailto:admin.info.ladarch@gmail.com)

# PARADOX TO PARADIGM:

## ARCHITECTURE IN THE AGE OF NETWORK SOCIETY

### THE THEME

Every paradigm germinates as a radical thought, a paradox. This paradox grows; pushing its way against opposition, strengthened by its validity, finally transforming into a paradigm that forever changes perceptions and perspectives. The new spatial order required to match the new emerging social order in the age of *Network Society* is presently in the state of *Paradox*, and intense deliberations are essential in order to facilitate its transition into a *Paradigm*.

Architecture is a social art, and has played a fundamental role in the evolution of human society. Through the ages, social, cultural and technological changes have impacted human life and influenced architecture. As a consequence of these changes, architecture has encountered paradoxes and paradigms at several junctures throughout its history. From natural cave shelters to built habitats, from mud to stone abodes, from brick to reinforced concrete structures, from indigenous buildings to those with foreign influences, from Industrial revolution to Post liberalization – architectural shifts have often had foundations in unorthodoxy, which subsequently evolved into accepted traditions. Such transitions were at times smooth (Gothic to Renaissance), at times turbulent (Neoclassical to Modernism), but what was consistent was the challenging of conventions, paving the way for new norms. The journey of documented history of architecture is full of such countless paradoxical moments when architects, through their radical works, established new paradigms. I.M. Pei's Louvre Pyramid is an excellent example of Paradox to Paradigm shift in architecture in the recent times.

Manuel Castells, way back in 1996, coined the term Network Society, a society where the key social structures and activities are organized around electronically processed information networks. The resultant Networking Logic has led to phenomenal transformations in the social and economic processes, radically changing many basic human operations such as working, shopping, communicating, designing, meeting, and several more. This transformation of the society is causing pivotal changes in architecture; resulting in the blurring of boundaries between virtual and real spaces and, radically changing the role of built spaces and the modes to generate them. Today as we stand at this juncture of information revolution and rise of Network Society, the architecture fraternity is once again posed with countless challenges about design philosophies, building typologies, design processes, materials, and technology of construction.

The conference theme as such neither endorses nor opposes this transformation in the society and architecture. Network Society is the harsh reality of today and the objective of the conference theme is to address this reality heads-on; to create a platform for contemplating on how architecture today is evolving in response to this reality of Network Society, and how we could shape the future of architecture through radical thinking – by generating paradoxes which could potentially evolve into paradigms.



Historicity & Modernity



Social Spaces



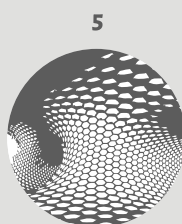
Education & Profession

The scope of the theme is vast, with a large spectrum of sub-themes ranging from philosophical stances to materials and technological aspects. Hence the deliberations can hold forth for (but not limited to) following sub-themes under the main theme:

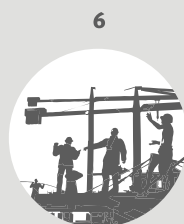
1. **Historicity and Modernity: An Emerging Order in the Age of Network Society**  
With the wide-ranging social changes due to the rise of electronically processed information networks, architecture is at a point in time where we are witnessing the emergence of new architectural constructs and typologies, and death of some old ones. The norms of historic and modern architecture need to be revisited to seek the new order appropriate for the changing society.
2. **Architecture as a Social Art in the age of Network Society**  
Social spaces are result of the social order, which in turn mould the society. With the emergence of overpowering virtual society and virtual social spaces, the design of the social spaces or urban spaces needs to be pondered upon. The built and unbuilt spaces, their landscaping and designing of urban spaces, on deliberation, can serve the changing needs of the people.
3. **New Directions in Architecture Profession and Education**  
The information age has affected all professions including architecture. There is a need to introspect on the role of an architect and develop future professionals to serve the society in the best possible way. Today's architecture education system has been greatly impacted by the onslaught of information available through the digital networks. The teaching – learning methods have to evolve in order to adapt to this changing situation. How do we give a new direction to the future of architecture profession and education looking at the merits and demerits of the traditional and new methods.
4. **Addressing Changing Cultural Contexts through Architecture**  
Culture is the way human life evolves and prospers in a specific time and place. It gets manifested through architecture and, importantly, at times architecture conversely influences the culture. One of the significant impacts of the evolution in culture of a place is on the identity of its Vernacular architecture. Vernacular architecture and Sustainability have gone hand-in-hand for a long time in the history of architecture, till globalization happened. Now, with the advent of Network Society and the consequent cultural shifts, is there a need to reinvent the definition of Vernacular architecture? What is the future of sustainability, once an integral part of culture, in this milieu? What are the other ways in which architecture could play a pivotal role in channeling these changes in the appropriate direction?
5. **Computational Design Paradigms**  
The way that architectural design is conceptualized, visualized, communicated, discussed or built has gone through a tremendous change with the advent of computational design paradigms. There are various schools of design thought within the two end poles – the traditional 'hand - mind' relation (championed by the likes of Juhanni Pallasma) on one end and the new-age computational design (epitomized by the likes of Zaha Hadid) on the other. There is a need to dwell on the myriad possibilities, positive as well as negative, generated by the highly promising but still being-explored computational design.
6. **New Technologies and Emerging Architecture in the age of Network Society**  
With the network society and the technological advent, advanced materials and technologies are continuously being invented and experimented upon. After industrial revolution, there were new materials and technologies, resulting in new architecture. Similarly, now with innovative materials, technologies and radical norms of functionality, new aesthetic sensibilities and architecture are emerging.



Culture &amp; Society



Computational Design



New Technologies

# CALL FOR PAPERS

Abstracts for Papers and Posters are invited from Research Scholars / Students / Faculty / Practitioners belonging to (but not limited to) the field of Architecture, Urban Planning, Landscape, Urban Design, Environmental Engineering and Sustainable Architecture/ Design/ Planning pertaining to the main theme/ sub-themes of the conference. All selected papers will be published as Conference Proceedings with ISBN number.

## FORMAT OF ABSTRACT

Title page: Title page shall consist of the title of the abstract, sub-title (if any), name(s) of author(s), brief information about author(s) and contact details of corresponding author (email and mobile number).

Abstract: The abstract page should follow the title page. This abstract page should contain the title and subtitle (if any) and contents of abstract with text in double space format. The abstract shall be maximum 200 - 250 words, along with 4-5 keywords and should be submitted in MS –Word format as per the provided template, on or before the date mentioned in the submission schedule.

Template for abstract shall be available on our conference website:

[www.paradoxtoparadigm.com](http://www.paradoxtoparadigm.com)

Detailed information on the format of full paper and its template will also be available on the conference website.

## ABSTRACT SUBMISSION GUIDELINES

The abstracts and full papers shall strictly follow the provided template, and shall be accepted only if they are submitted in camera-ready form in MS –Word format. Kindly refer to the submission schedule for important dates. No abstract or full paper submission will be accepted after due date. Notification of selection will be given via email provided by the corresponding author.

Out of the selected papers only some shall be allowed for presentation at the conference. Due notification shall be given for the papers selected for presentation at the conference as per the schedule.

Author(s) of the selected papers need to be registered in order for their papers to be published in the proceedings.

Certificates of participation shall be issued to all registered delegates.

## POSTER SUBMISSION GUIDELINES

1. Abstract for poster shall be submitted by the due date
2. Poster shall be submitted only on acceptance of abstract
3. Size of poster should be A1 Portrait
4. Format of the poster should be JPEG / PDF
5. Resolution of image should not be less than 400dpi in presentation mode
6. At least one author needs to be registered for the conference and should be present for poster's presentation



### Contact details for conference

Abstracts/Full papers/Posters shall be emailed to -  
[submissions.ptp@smmca.edu.in](mailto:submissions.ptp@smmca.edu.in)

For other queries contact

M: +91 7721820749 | E: [enquiries.ptp@smmca.edu.in](mailto:enquiries.ptp@smmca.edu.in) | W: [www.paradoxtoparadigm.com](http://www.paradoxtoparadigm.com)

- Register online at [www.paradoxtoparadigm.com](http://www.paradoxtoparadigm.com)
- Options for accommodation shall be provided to interested delegates on self finance basis

## Registration Details

	Early Bird Upto 30 <sup>th</sup> November 2017	1 <sup>st</sup> December 2017 onwards
Academicians/Professionals	Rs. 3500/- USD 80	Rs. 4500/- USD 100
Research Scholars	Rs. 2500/- USD 60	Rs. 3500/- USD 80
Students	Rs. 1200/- USD 40	Rs. 1500/- USD 60

\* Fees are inclusive of GST \* Payment details on website



## WOMEN'S EDUCATION SOCIETY'S SMT. MANORAMABAI MUNDLE COLLEGE OF ARCHITECTURE

This conference is being hosted to commemorate the Silver Jubilee year of our college. Smt. Manoramabai Mundle College of Architecture transformed, from a dynamic young department established in 1993, into a full fledged college of Architecture under Women's Education Society, serving the needs of professional education in architecture for women.

Today our college is one of the leading architectural institutes of Central India and features prominently at national level. We take this opportunity of our Silver Jubilee to introspect and celebrate our growth till now, and equip ourselves to take on the emerging challenges. with new vigor and confidence.



## About Nagpur

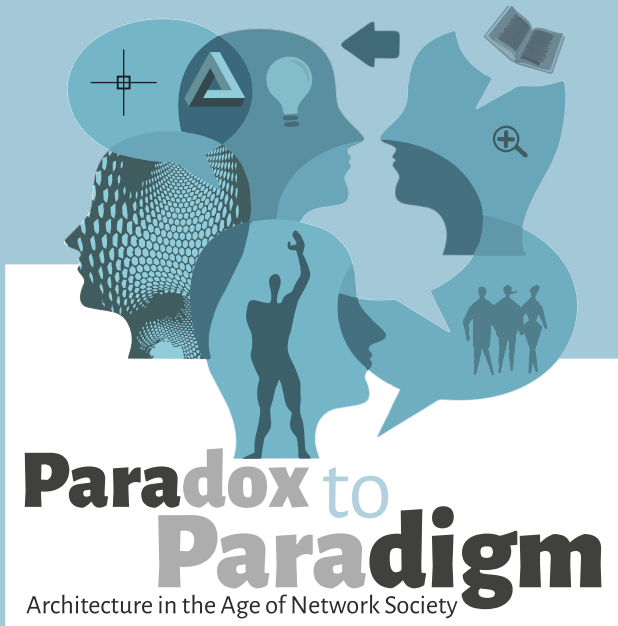


Nagpur is the winter capital, a sprawling metropolis and the third largest city of the Indian state of Maharashtra. With nomen-clatures like 'Orange City' and 'Tiger Capital' Nagpur is literally located in the center of the country with the Zero Mile marker affixed as the geographical center of India. Nagpur has been identified as the best city in India in terms of greenery, public transport, health care facilities and livability indices. Climate in March is fairly pleasant, with average day temperature of about 33° C and colder nights with temperature dropping upto 19° C.

Nagpur city has more than 300 years of historical background and is rich in architecture of historical significance, with several structures like temples, wadas (Traditional Large houses) and stepped wells from Bhonsale regime of 18th century. Nagpur was also the capital of Central Provinces & Berar under the British rule in the 19th century & it has several beautiful buildings in Colonial style. There are several places worth visiting in and around Nagpur which date back even to ancient times. Few places to visit near Nagpur— Tiger and Wildlife Sanctuaries—Tadoba, Pench, Bor, Umred—Karandhla etc. Archaeological excavation sites at Drugdhamna and Mansar, Temples at Adasa, Ramtek etc Places of natural beauty like Pachmarhi, Chikkhaldara, Khindsi Lake etc.

## Important Dates

October 15, 2017	Last date of Abstract Submission
October 30, 2017	Notification of Acceptance
November 30, 2017	Last date of Full Paper Submission
November 30, 2017	Last date for Early Bird registration
January 15, 2018	Notification of Paper Presentation



An International Conference

### Chief Patron:

Adv. V. R. Manohar  
President Women's Education Society

### Advisory Board:

Dr. Panna Akhani  
Mrs. Varsha Manohar  
Prof. Kulbhushan Jain  
Ar. Karan Grover  
Ar. Snehal Shah  
Ar. Sunil Degwekar  
Prof. Shriram Marathe

### Organising committee:

Organising Chairperson: **Dr. Ujwala Chakradeo**  
Organising Secretary: **Dr. Sampada Peshwe**  
Joint Organising Secretary: **Dr. Priya Choudhary**

### Organising team

Ar. Neeta Lambe  
Ar. Sujata Godbole  
Ar. Medha Pophale  
Ar. Anuradha Bhute  
Ar. Nidhi Rathi  
Ar. Piyusha Rathor

Prof. Atula Patwardhan  
Ar. Madhuri Deshpande  
Ar. Renuka Chakradeo  
Ar. Poornima Deshpande  
Ar. Nehal Maheshwari  
Ar. Rashmi Thakre

### Magazine Media Partner:



Design Detail:  
The architecture magazine